



# TCM SERIES HIGH-END MOTORIZED CARD & TICKET READER AND WRITER

Highly reliable card reader and writer of magnetic stripe and smart card

- TCM Series offers various security features, such as full-Shutter, anti-skimming and optionally available anti-phishing to support the increasing demand of security from the financial market.
- Extend the reliability and security of your ATM, CD and payment system with POINTMAN's TCM Series.
- Parking system

## APPLICATION

- ATM/CD
- Vending machine
- Fare collection system
- Payment terminal
- Kiosk machine
- Parking system



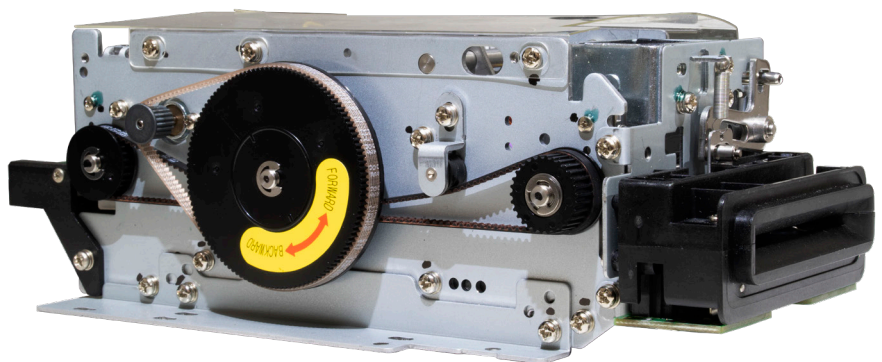
MS



IC



RF



## FEATURES

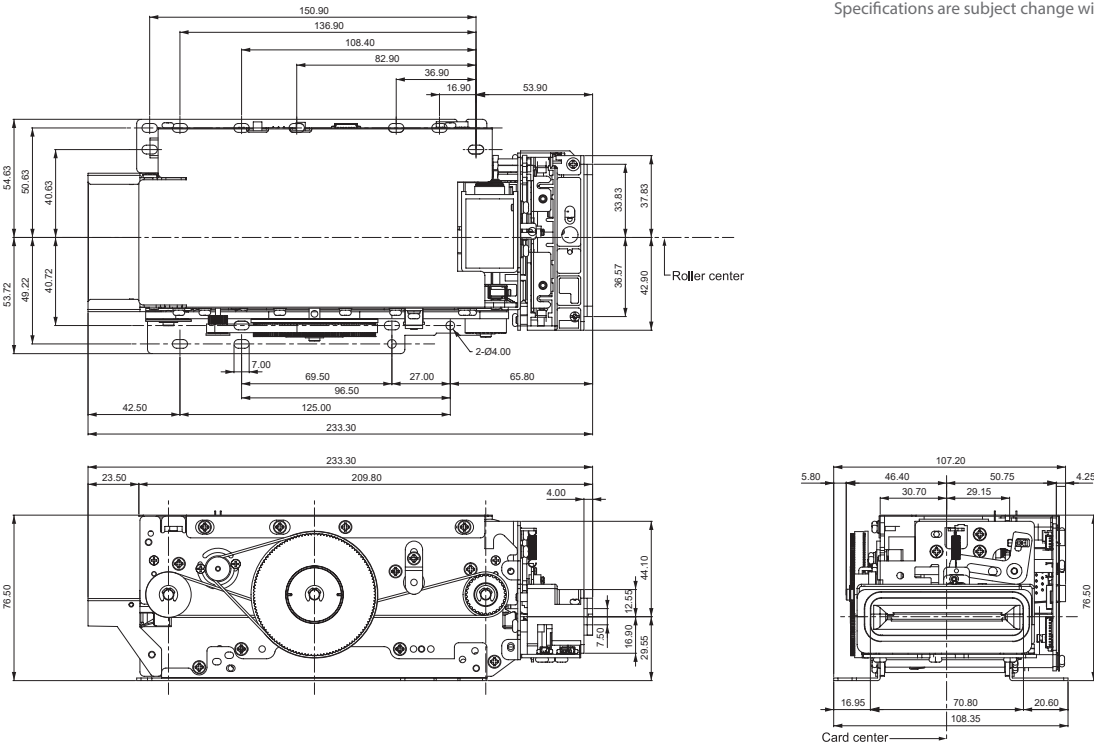
- Mag.Stripe 1/2/3 track read & write track read/write
- IC Contact card read & write
- RF Contactless smart card read & write (optional)
- Data Encryption with triple DES and single DES
- Full security shutter with pre-head
- RS232C or USB interface
- EMV Level 1 & EMV Level 2(Payment Offline)
- Optional anti-skimming
- Anti-phishing option
- Optional metal detecting

# TCM SERIES HIGH-END MOTORIZED CARD & TICKET READER AND WRITER

## TECHNICAL SPECIFICATIONS

ITEM	SUB ITEM	DESCRIPTION
Magnetic Stripe		ISO7811(Track 1,2,3), JIS II
		Coercivity: HiCo / LoCo
Contact Smart Card		ISO 7816
		T=0, T=1 protocol
		EMV Level 1, EMV Level 2(Payment Offline)
		Contact landing type – 8 pin contact
Contactless Smart Card (Optional)		ISO 14443 A/B, Mifare, Desfire, NFC, Felica (PC/SC or Serial)
		*Other types upon request
Card Speed	MS Read/Write	450mm/sec ± 10%
	Card Transport	560mm/sec(typ.)
Interface		RS232C or USB
Power		+24Vdc +10%, 2A (basic)
Life Time	Unit	1,000,000 cycles
	Magnetic Stripe Head	250,000 cycle (standard), 2,000,000 cycle (option)
	Smart Card Contact	1,000,000 contacts
Temperature	Operating	5 ~ 50°C
	Storage	-20 ~ 70°C
Humidity	Operating	20% ~ 80% RH
	Storage	20% ~ 80% RH
Dimension	MS / IC	108.35mm (W) x 209.8mm (L) x 76.5mm (H)
	MS / IC / RF	108.35mm (W) x 233.3mm (L) x 76.5mm (H)
Weight		1.66 kg

Specifications are subject change without notice



TCM - [Color-coded connector labels]

ID	Interface	Mag.					IC, SAM			RF	Inlet			
		NO.	ISO1	ISO2	ISO3	Life time	JIS II	NO.	IC		SAM	Code	Dip	Description
C : Standard Type	R : RS-232C U : USB T : TTL	1	R/W	R/W	R/W	400	X	0	O	1	0 : Non-RF 1 : RF 2 : External RF			
		2	R	R	R	50	X	1	O	1				
		3	R/W	R/W	R/W	400	RW	2	O	4				
		4	R	R	R	50	R	3	X	0				
		5	R	R	R	400	X	4	O	0				
											Standard			
											N	None	None	
											S	S-Shutter	Pre+width	
											B	BEZEL	None	

